

# Tyres

for trail, motocross, enduro, rally,  
trial, flat track and speedway

OFF-ROAD BROCHURE 2019

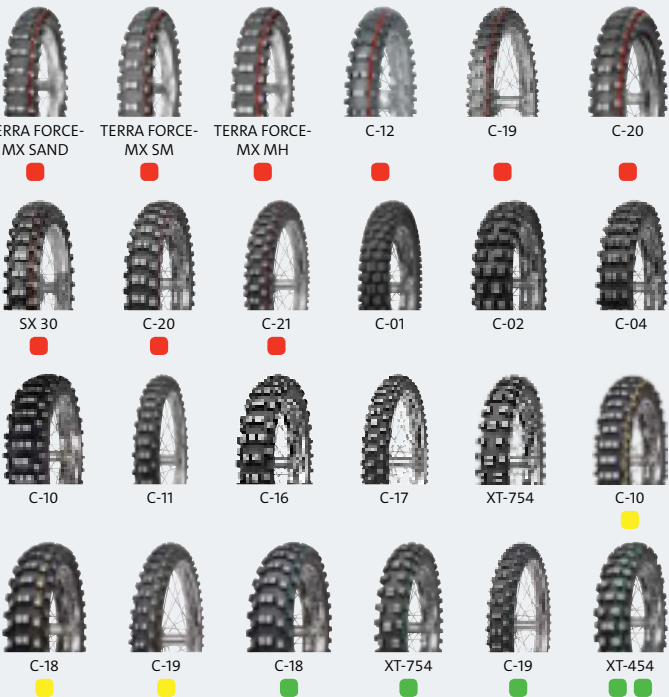


# Tread patterns

## TRAIL



## OFF-ROAD



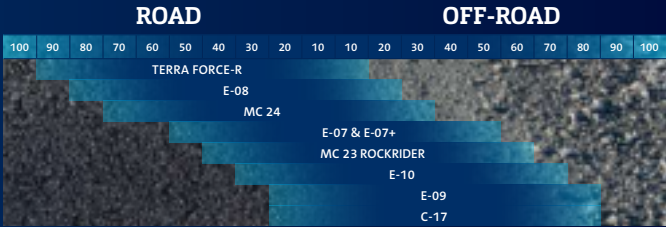
# Tread patterns



## Contents

| TRAIL                 |    |
|-----------------------|----|
| Trail                 | 4  |
| OFF-ROAD              |    |
| Motocross competition | 11 |
| Kid cross             | 13 |
| Pit cross             | 14 |
| Motocross             | 14 |
| Cross country         | 16 |
| Enduro                | 18 |
| Extreme enduro        | 19 |
| Rally                 | 21 |
| Trial                 | 21 |
| Flat track            | 22 |
| Speedway              | 22 |
| TUBES                 |    |
| Tubes                 | 25 |

TRAIL



Tyre markings for trail tyres

- Yellow stripe - DAKAR: tyre with a stronger carcass and higher puncture resistance. Suitable for higher loads, longer adventure trips and extreme conditions.

Trail

TERRA FORCE-R

Dual purpose tyre for adventure riders.

**LONGER SERVICE LIFE**

Strong Carcass Technology maintains the carcass rigidity at a high level even as the tyre wears, thereby prolonging the optimum driving performance throughout the tyre's service life.

**HIGH GRIP AND STABILITY**

Using the finite elements analysis (FEA) and a special computer-assisted simulation, optimum tyre construction was designed to achieve the highest level of grip, but at the same time rigid enough to achieve driving stability.

**MAXIMUM CONTROL**

In Mitas TERRA FORCE-R design, the tread groove depth follows the shape of actual tyre tread wear.

**LESS OVERHEATING**

3-D Optimum Groove Technology (OGT 3D) is featured by optimum tread groove direction, optimum groove depth and less overheating of tread compounds.

Cooling ribs

ROAD 90 10 OFF ROAD

| TERRA FORCE - R |            |     |       |       |  |  | OPTIMUM STEEL CORD TECHNOLOGY   |  | FINAL ELEMENT ANALYSIS    |
|-----------------|------------|-----|-------|-------|--|--|---------------------------------|--|---------------------------|
| 586678          | 120/90-17  | 64H | TL    | [ R ] |  |  |                                 |  |                           |
| 586683          | 130/80-17  | 65H | TL    | [ R ] |  |  | 3-D OPTIMUM GROOVE TECHNOLOGY   |  | STRONG CARCASS TECHNOLOGY |
| 567774          | 140/80R17  | 69V | TL    | [ R ] |  |  |                                 |  |                           |
| 567772          | 150/70R17  | 69V | TL    | [ R ] |  |  |                                 |  |                           |
| 567778          | 170/60ZR17 | 72W | TL    | [ R ] |  |  | MULTI COMPOUND TREAD TECHNOLOGY |  |                           |
| 597283*         | 150/70R18  | 70V | TL/TT | [ R ] |  |  |                                 |  |                           |
| 586684          | 100/90-19  | 57H | TL    | [ F ] |  |  |                                 |  |                           |
| 567770          | 110/80R19  | 59V | TL    | [ F ] |  |  |                                 |  |                           |
| 567775          | 120/70ZR19 | 60W | TL    | [ F ] |  |  |                                 |  |                           |
| 586689          | 90/90-21   | 54H | TL    | [ F ] |  |  |                                 |  |                           |
| 586691          | 90/90-21   | 54V | TL    | [ F ] |  |  |                                 |  |                           |

\* Available in April 2019

SAFE, DYNAMIC AND RIDER-FRIENDLY TYRE

- Immediate grip, excellent traction on wet or dry roads, strong carcass and high puncture resistance.
- Easy steering and manoeuvrability with good straight and corner stability.
- Consistent performance through its lifetime and under heavy loads.
- Most modern elastomers and high active fillers for excellent grip in all conditions, optimal balanced wear rate and maximum confidence.
- MCTT (Multi Compound Tread Technology) with selected rear sizes.

# Trail

E-07



ROAD 50 50 OFF ROAD

## E-07

|       |           |     |    |             |
|-------|-----------|-----|----|-------------|
| 24130 | 120/90-17 | 64S | TL | [ R ]       |
| 24406 | 140/80-17 | 69T | TL | [ R ]       |
| 24408 | 140/80-17 | 69T | TL | [ R ] DAKAR |
| 24415 | 130/80-18 | 72T | TL | [ R ]       |
| 24427 | 140/80-18 | 70T | TL | [ R ]       |
| 24429 | 140/80-18 | 70T | TL | [ R ] DAKAR |
| 24547 | 100/90-19 | 57T | TL | [ F ]       |
| 24545 | 100/90-19 | 57T | TL | [ F ] DAKAR |
| 24636 | 90/90-21  | 54T | TL | [ F ]       |
| 24637 | 90/90-21  | 54T | TL | [ F ] DAKAR |

E-07+



ROAD 50 50 OFF ROAD

## E-07+

|       |           |     |    |             |
|-------|-----------|-----|----|-------------|
| 24135 | 130/80B17 | 65T | TL | [ R ]       |
| 24060 | 150/70B17 | 69T | TL | [ R ] DAKAR |
| 24059 | 150/70B17 | 69T | TL | [ R ]       |
| 24031 | 170/60B17 | 72T | TL | [ R ]       |
| 24030 | 170/60B17 | 72T | TL | [ R ] DAKAR |
| 24400 | 120/80B18 | 62T | TL | [ R ]       |
| 24061 | 150/70B18 | 70T | TL | [ R ]       |
| 24416 | 150/70B18 | 70T | TL | [ R ] DAKAR |
| 24444 | 110/80B19 | 59T | TL | [ F ]       |
| 24448 | 110/80B19 | 59T | TL | [ F ] DAKAR |
| 24143 | 120/70B19 | 60T | TL | [ F ]       |
| 24142 | 120/70B19 | 60T | TL | [ F ] DAKAR |

When it comes to a 50/50 adventure tyre, Mitas E-07 is one of the most desired choices among adventure riders, who love to combine comfortable road riding with more adventurous off-road getaways.

The E-07+ was developed with a goal of successfully replacing the selected sizes of famous and very popular E-07. The aim was to keep the tyre performance in line with more and more powerful bikes and increasingly demanding riders. Our development team has preserved all the main benefits of the original E-07 and successfully improved the tyre towards the next level. Riders will still enjoy its original multi-functionality and its original durability.

A slightly modified tread pattern of E-07+ delivers an improved off- and on-road riding performance. A bigger knobby design provides a plenty of open space between the tread blocks to displace sand, mud and water from the contact patch while keeping enough rubber in contact between the road and the rotating tyre.

## FREQUENTLY ASKED QUESTIONS ABOUT E-07 AND E-07+

### Can I combine E-07 and E-07+?

A variety of tests on different bikes and under different conditions confirmed that E-07+ is fully compatible with E-07. They can be fitted as a pair (e.g. E-07 front, E-07+ rear).

### Can I combine the standard and DAKAR versions?

To ensure optimal riding performance, we recommend using the same version on the front and the rear wheel. However, if you would like to combine the standard and the DAKAR versions, we advise that you fit the standard version on the front wheel and the DAKAR on the rear wheel.

### What E-07 sizes will be replaced with E-07+?

Please check the list of available sizes under the picture of each tread pattern.

### What tyre pressure should I use?

Please follow the recommendations from your motorcycle user manual. If you lower tyre pressure for off-road use, do not forget to adjust and increase it when going back on-road.

# Trail



M+S

## E-08

|       |           |     |    |       |
|-------|-----------|-----|----|-------|
| 24151 | 120/90-17 | 64T | TL | [ R ] |
| 24125 | 130/80-17 | 65T | TL | [ R ] |
| 24152 | 140/80-17 | 69H | TL | [ R ] |
| 24161 | 150/70-17 | 69H | TL | [ R ] |
| 24450 | 4.10-18   | 60P | TT | [ R ] |
| 24414 | 130/80-18 | 72T | TL | [ R ] |
| 24108 | 100/90-19 | 57H | TL | [ F ] |
| 24109 | 110/80-19 | 59H | TL | [ F ] |
| 24682 | 2.75-21   | 45P | TT | [ F ] |
| 24642 | 90/90-21  | 54T | TL | [ F ] |

ROAD 80 20 OFF ROAD

Modern tyre tread pattern for both the front and rear wheels of adventure motorcycles. Excellent performance on roads and less demanding hard terrain.



M+S

## MC 23 ROCKRIDER

|        |           |     |    |       |
|--------|-----------|-----|----|-------|
| 573407 | 110/80-18 | 58P | TT | [ R ] |
| 573470 | 120/90-18 | 65R | TT | [ R ] |
| 573432 | 140/80-18 | 70R | TT | [ R ] |
| 573427 | 80/90-21  | 48P | TT | [ F ] |
| 573465 | 90/90-21  | 54R | TT | [ F ] |

ROAD 40 60 OFF ROAD

Big and stable blocks. Good grip also when riding on-road.



M+S

## MC 24

|        |           |     |    |       |
|--------|-----------|-----|----|-------|
| 573403 | 120/90-17 | 64S | TL | [ R ] |
| 573393 | 130/80-17 | 65S | TL | [ R ] |
| 573400 | 120/80-18 | 62S | TT | [ R ] |
| 573406 | 100/90-19 | 57S | TL | [ F ] |
| 573398 | 90/90-21  | 54S | TT | [ F ] |

ROAD 70 30 OFF ROAD

Homologated for speeds up to 180 km/h. Suitable for use without or with inner tube.



M+S

## E-10

|       |            |     |    |             |
|-------|------------|-----|----|-------------|
| 24160 | 140/80B17  | 69T | TL | [ R ]       |
| 24424 | 140/80B17  | 69T | TL | [ R ] DAKAR |
| 24039 | 150/70B17  | 69T | TL | [ R ]       |
| 24055 | 150/70B17  | 69T | TL | [ R ] DAKAR |
| 24033 | 170/60B17  | 72Q | TL | [ R ]       |
| 24423 | 140/80B18  | 70T | TL | [ R ]       |
| 24426 | 140/80B18  | 70T | TL | [ R ] DAKAR |
| 24162 | 150/70 B18 | 70T | TL | [ R ]       |
| 24163 | 150/70B18  | 70T | TL | [ R ] DAKAR |
| 24437 | 110/80 B19 | 59T | TL | [ F ]       |
| 24443 | 110/80B19  | 59T | TL | [ F ] DAKAR |
| 24141 | 120/70B19  | 60Q | TL | [ F ]       |
| 24655 | 90/90B21   | 54T | TL | [ F ]       |
| 24656 | 90/90B21   | 54T | TL | [ F ] DAKAR |

ROAD 30 70 OFF ROAD

Tread pattern for off-road adventure trips. Excellent traction off-road and good stability on dry and wet roads. Available also in Dakar version. Special version with additional textile breaker. Strong construction is suitable for long adventure trips. A tyre will last longer and is much more puncture resistant.



# Trail



| E-09  |           |     |    |       |       |
|-------|-----------|-----|----|-------|-------|
| 24147 | 120/90-17 | 64R | TL | [ R ] |       |
| 24131 | 120/90-17 | 64R | TL | [ R ] | DAKAR |
| 24121 | 130/80-17 | 65R | TL | [ R ] |       |
| 24112 | 130/80-17 | 65R | TL | [ R ] | DAKAR |
| 24052 | 140/80-17 | 69R | TL | [ R ] |       |
| 24145 | 140/80-17 | 69R | TL | [ R ] | DAKAR |
| 24046 | 150/70-17 | 69R | TL | [ R ] |       |
| 24048 | 150/70-17 | 69R | TL | [ R ] | DAKAR |
| 24432 | 110/80-18 | 58P | TT | [ R ] |       |
| 24460 | 4.10-18   | 60P | TT | [ R ] |       |
| 24420 | 130/80-18 | 72R | TL | [ R ] |       |
| 24397 | 130/80-18 | 72R | TL | [ R ] | DAKAR |
| 24159 | 140/80-18 | 70R | TL | [ R ] |       |
| 24176 | 140/80-18 | 70R | TL | [ R ] | DAKAR |
| 24169 | 150/70-18 | 70R | TL | [ R ] |       |
| 24172 | 150/70-18 | 70R | TL | [ R ] | DAKAR |
| 24553 | 100/90-19 | 57R | TL | [ F ] |       |
| 24555 | 100/90-19 | 57R | TL | [ F ] | DAKAR |
| 24456 | 110/80-19 | 59R | TL | [ F ] |       |
| 24457 | 110/80-19 | 59R | TL | [ F ] | DAKAR |
| 24644 | 90/90-21  | 54R | TL | [ F ] | DAKAR |
| 24648 | 80/90-21  | 48P | TT | [ F ] |       |
| 24686 | 2.75-21   | 45P | TT | [ F ] |       |
| 24645 | 90/90-21  | 54R | TL | [ F ] |       |

ROAD 20 80 OFF ROAD

Tread pattern for mainly off-road trips. Excellent traction off-road and good stability on dry and wet roads. Available in Dakar version. Special version with additional textile breaker. Strong construction is suitable for long adventure trips. A tyre will last longer and is much more puncture resistant.



| E-03  |         |     |    |
|-------|---------|-----|----|
| 23187 | 3.50-18 | 62R | TT |

Versatile block type tread pattern for rear wheels. Suitable for riding on both well-maintained and rough roads. Recommended in combination with the E-02.

# Trail



| C-17  |          |     |                |
|-------|----------|-----|----------------|
| 26705 | 90/90-21 | 54R | TT [ F ] DAKAR |

ROAD 20 80 OFF ROAD

Tread pattern for the front wheels of adventure motorcycles. Tread pattern suitable for intermediate to hard terrain. C-17 can be also used for rally races.



| E-02  |         |     |    |
|-------|---------|-----|----|
| 23325 | 3.00-21 | 54S | TT |

Versatile block type tread pattern for front wheels. Suitable for riding on well-maintained and rough roads. Recommended in combination with the E-03.



| E-06  |         |     |    |
|-------|---------|-----|----|
| 26049 | 2.75-16 | 46P | TT |

Block tread pattern for versatile cross riding. Tread pattern designed particularly for off-road use. To be fitted on both the front and rear wheels of small motorcycles.



| E-05  |         |     |    |
|-------|---------|-----|----|
| 24891 | 4.00-19 | 65M | TT |
| 23324 | 3.00-21 | 54S | TT |

Enduro trail universal type of tread pattern for front and rear wheels. Good riding properties on easier terrain and roads as well.



| ET-01 |         |     |           |
|-------|---------|-----|-----------|
| 24884 | 4.00-18 | 64M | TL ENDURO |

Enduro trail type of tread pattern for rear wheels suitable for small trail bikes. Good riding properties on easier hard and medium terrain and roads.



# OFF-ROAD



|                       |    |                |    |
|-----------------------|----|----------------|----|
| Motocross competition | 11 | Extreme enduro | 19 |
| Kid cross             | 13 | Rally          | 21 |
| Pit cross             | 14 | Trial          | 21 |
| Motocross             | 14 | Flat track     | 22 |
| Cross country         | 16 | Speedway       | 22 |
| Enduro                | 18 |                |    |

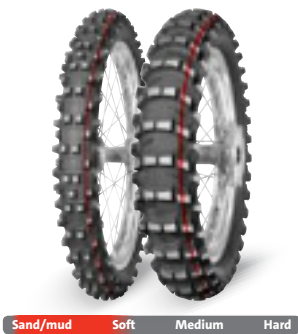
## Tyre markings for motocross and enduro tyres

- Red stripe - tyre for motocross competition
- White stripe - tyre for winter use, spiking, motoskyöring and ice motocross
- Yellow stripe - tyre with softer compound suitable for enduro FIM and cross country competition
- Green stripe - tyre with softer carcass and soft tread suitable for hard enduro competition
- Double green stripe - tyre with softer carcass and extra soft tread compound suitable for extreme hard enduro competition
- Tyre without stripe - normal motocross tyres suitable for training and hobby riding

# Motocross competition

The completely new Mitas TERRA FORCE-MX line is intended for both professional and amateur riders seeking high performance. Mitas TERRA FORCE-MX replaces the previous motocross competition range and was developed in cooperation with many professional motocross riders on different tracks and various types of terrain. The new line is offered in three tread patterns to meet the requirements of all riders and types of terrain.

## NEW TERRA FORCE-MX SAND



| TERRA FORCE-MX SAND |           |      |    |       |  |   |
|---------------------|-----------|------|----|-------|--|---|
| 26633               | 100/90-19 | 57M* | TT | [ R ] |  | ■ |
| 26647               | 110/90-19 | 62M* | TT | [ R ] |  | ■ |
| 26517               | 120/80-19 | 63M* | TT | [ R ] |  | ■ |
| 26719               | 80/100-21 | 51M* | TT | [ F ] |  | ■ |
| *NHS                |           |      |    |       |  |   |

Motocross tyres for use in deep sand and mud. The rear tyre has a hybrid design for loose terrain and sandy track conditions. A semi-paddle construction and wide row spacing ensure maximum clearing, even in the stickiest mud or sand. The hybrid design incorporates large centre lugs that provide traction of a paddle tyre, and an aggressive layout of side lugs for the cornering ability of a traditionally soft terrain tyre. The outer block profiles provide superior traction on sand or muddy terrain. The front tyre features a scooped centre tread pattern that acts like a paddle to evacuate sand and deliver traction. A sharp paddle design with a reinforced shoulder supports hard landing after jumping and breaking. There are sharp knobs in the central tread pattern of the front tyre for extended tread life.

## NEW TERRA FORCE-MX SM



| TERRA FORCE-MX SM |            |      |    |       |  |   |
|-------------------|------------|------|----|-------|--|---|
| 26157             | 70/100-14  | 40M* | TT | [ F ] |  | ■ |
| 26311             | 100/100-18 | 59M* | TT | [ R ] |  | ■ |
| 26321             | 110/100-18 | 64M* | TT | [ R ] |  | ■ |
| 26559             | 120/90-18  | 65M* | TT | [ R ] |  | ■ |
| 26645             | 100/90-19  | 57M* | TT | [ R ] |  | ■ |
| 26606             | 110/90-19  | 62M* | TT | [ R ] |  | ■ |
| 26519             | 120/80-19  | 63M* | TT | [ R ] |  | ■ |
| 26731             | 80/100-21  | 51M* | TT | [ F ] |  | ■ |
| 26760             | 90/90-21   | 51M* | TT | [ F ] |  | ■ |
| *NHS              |            |      |    |       |  |   |

Motocross tyres for varied conditions, from soft to medium. These feature a tapered knob design that chisels its way through the soft ground to get traction. The high well-spaced knobs are tied at the base to be reinforced for a longer life. The front and rear tyres are designed in a similar way but with differences that work well together. The high well-spaced knobs are tied at the base to be reinforced for longer life.

SM - soft/medium



# Motocross competition

NEW

TERRA FORCE-MX MH



| TERRA FORCE-MX MH |            |      |    |       |   |
|-------------------|------------|------|----|-------|---|
| 26315             | 100/100-18 | 59M* | TT | [ R ] | ■ |
| 26649             | 110/100-18 | 64M* | TT | [ R ] | ■ |
| 26353             | 120/90-18  | 65M* | TT | [ R ] | ■ |
| 26797             | 100/90-19  | 57M* | TT | [ R ] | ■ |
| 26798             | 110/90-19  | 62M* | TT | [ R ] | ■ |
| 26516             | 120/80-19  | 63M* | TT | [ R ] | ■ |
| 26733             | 80/100-21  | 51M* | TT | [ F ] | ■ |
| 26761             | 90/90-21   | 51M* | TT | [ F ] | ■ |
| *NHS              |            |      |    |       |   |

Motocross tyres for all types of terrain, from medium to hard. The rear tyre knobs offer maximum traction on all terrain applications. The surface area and new structure of tread compound ensure a balance between stiffness, reliability and long-lasting performance. The tread pattern is designed for maximum traction, even with changing terrain conditions, to provide maximum speed and ride control. The broad spacing between the central knobs provides maximum traction on intermediate to hard terrain. The front tyre knobs have an arrow-like layout and the side knobs deliver directional accuracy on the straightaway.

MH - medium/hard

You can find more information about replacements on page 24.



# Kid cross

C-12

|          |         |        |      |   |
|----------|---------|--------|------|---|
| 26010    | 2.50-10 | 37J    | TT   | ■ |
| *NHS     |         |        |      |   |
| Sand/mud | Soft    | Medium | Hard |   |

A tread pattern for the front and rear wheels of kid cross motorcycles up to 50 cc. Recommended for soft terrain. The tread pattern design provides optimum riding properties in all riding modes.

C-19

|          |           |        |      |       |   |
|----------|-----------|--------|------|-------|---|
| 26022    | 2.50-12   | 37M*   | TT   | [ F ] | ■ |
| 26043    | 60/100-14 | 30M    | TT   | [ F ] | ■ |
| 26163    | 70/100-17 | 40M    | TT   | [ F ] | ■ |
| 26617    | 70/100-19 | 42M    | TT   | [ F ] | ■ |
| *NHS     |           |        |      |       |   |
| Sand/mud | Soft      | Medium | Hard |       |   |

Tread pattern for the front wheels for kid cross motorcycles from 50 to 150 cc. Recommended for medium to medium-hard terrain. Official tyre for Honda 150 European Championship 2017.

TERRACROSS SX30

|          |           |        |      |       |   |
|----------|-----------|--------|------|-------|---|
| 26787    | 80/100-12 | 50M*   | TT   | [ F ] | ■ |
| 26786    | 60/100-14 | 30M*   | TT   | [ R ] | ■ |
| *NHS     |           |        |      |       |   |
| Sand/mud | Soft      | Medium | Hard |       |   |

A tread pattern for the front and rear wheels of kid cross motorcycles. Recommended for soft to medium terrain. Reinforced tread pattern provides increased tyre resistance with less chipping and chunking. Additional sipes in tread blocks maximise contact with surface when riding straight or cornering extremely.

C-20

|          |           |        |      |       |   |
|----------|-----------|--------|------|-------|---|
| 26028    | 2.75-10   | 37M*   | TT   | [ R ] | ■ |
| 26001    | 80/100-12 | 50M*   | TT   | [ R ] | ■ |
| 26075    | 90/100-14 | 49M    | TT   | [ R ] | ■ |
| 26092    | 90/100-16 | 51M    | TT   | [ R ] | ■ |
| *NHS     |           |        |      |       |   |
| Sand/mud | Soft      | Medium | Hard |       |   |

Tread pattern for the rear wheels for kid cross motorcycles from 50 to 150 cc. Recommended for medium to medium-hard terrain. Official tyre for Honda 150 European Championship 2017.



# Pit cross



C-20

|                                 |           |     |    |       |
|---------------------------------|-----------|-----|----|-------|
| 26073                           | 90/100-12 | 46M | TT | [ R ] |
| *NHS                            |           |     |    |       |
| Sand/mud   Soft   Medium   Hard |           |     |    |       |

Tread pattern for the rear wheels for small motocross motorcycles for Pit Cross competitions. Recommended for medium to medium-hard terrain. Design with strong outside knobs to resist chunking. The rubber compound and carcass are best suited to competitions.



C-21

|                                 |          |     |    |       |
|---------------------------------|----------|-----|----|-------|
| 26071                           | 90/90-14 | 46M | TT | [ F ] |
| *NHS                            |          |     |    |       |
| Sand/mud   Soft   Medium   Hard |          |     |    |       |

Tread pattern for the front wheels for small motocross motorcycles for Pit Cross competitions. Recommended for medium to medium-hard terrain. Knob design provides excellent clean-out properties. Aggressive cornering ability in wet and slippery conditions.

# Motocross



C-01

|                                 |         |      |    |               |
|---------------------------------|---------|------|----|---------------|
| 26069                           | 3.50-16 | 58P* | TT | [ F ] + [ R ] |
| *NHS                            |         |      |    |               |
| Sand/mud   Soft   Medium   Hard |         |      |    |               |

A block tread pattern for the front and rear wheels for motocross motorcycles. Excellent for versatile riding.



C-02

|                                 |            |     |    |       |
|---------------------------------|------------|-----|----|-------|
| 26131                           | 130/80-17  | 65N | TT | [ R ] |
| 26458                           | 110/100-18 | 71N | TT | [ R ] |
| 26362                           | 120/90-18  | 71N | TT | [ R ] |
| 26566                           | 120/90-19  | 66N | TT | [ R ] |
| *NHS                            |            |     |    |       |
| Sand/mud   Soft   Medium   Hard |            |     |    |       |

Tread pattern for the rear wheels for motocross and sidecar cross motorcycles. Offering very good riding properties on harder terrain. Available also in 17-inch tyre size.

# Motocross



C-04

|                                 |           |      |    |       |
|---------------------------------|-----------|------|----|-------|
| 26301                           | 110/90-18 | 61N* | TT | [ R ] |
| 26357                           | 130/90-18 | 69N* | TT | [ R ] |
| *NHS                            |           |      |    |       |
| Sand/mud   Soft   Medium   Hard |           |      |    |       |

Tread pattern for the rear wheels. Recommended for semi-soft to semi-hard terrain. Offers optimum riding properties. Suitable for various conditions.



C-10

|                                 |           |      |    |       |
|---------------------------------|-----------|------|----|-------|
| 26336                           | 120/90-18 | 65M* | TT | [ R ] |
| *NHS                            |           |      |    |       |
| Sand/mud   Soft   Medium   Hard |           |      |    |       |

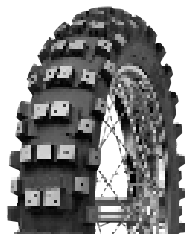
Tread pattern for the rear wheels. Recommended for soft to medium-hard terrain. Offers optimum riding properties. Suitable for various riding modes.



C-11

|                                 |           |      |    |       |
|---------------------------------|-----------|------|----|-------|
| 26726                           | 80/100-21 | 51R* | TT | [ F ] |
| *NHS                            |           |      |    |       |
| Sand/mud   Soft   Medium   Hard |           |      |    |       |

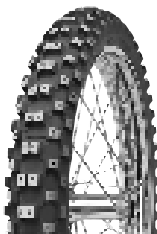
Tread pattern for the front wheels. Recommended for semi-hard to hard terrain. Offers optimum riding properties. Suitable for various riding modes.



C-16

|       |            |     |    |       |
|-------|------------|-----|----|-------|
| 26452 | 100/100-18 | 59M | TT | [ R ] |
| 26456 | 110/100-18 | 64R | TT | [ R ] |
| 26562 | 100/90-19  | 57M | TT | [ R ] |
| 26558 | 110/90-19  | 62M | TT | [ R ] |
| 26554 | 120/90-19  | 66N | TT | [ R ] |

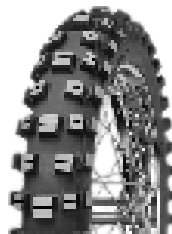
Tread pattern for the rear wheels. Recommended for intermediate to hard terrain. Offering very good riding properties. Suitable for supercross races as well.



C-17

|                                 |          |     |    |       |
|---------------------------------|----------|-----|----|-------|
| 26708                           | 90/90-21 | 54R | TT | [ F ] |
| Sand/mud   Soft   Medium   Hard |          |     |    |       |

Tread pattern for the front wheels. Recommended for medium to hard terrain. Offering very good riding properties. Suitable for supercross races as well.



XT-754

|       |            |     |    |       |
|-------|------------|-----|----|-------|
| 28078 | 110/100-18 | 64P | TT | [ R ] |
| 28023 | 120/90-18  | 66P | TT | [ R ] |
| 28063 | 110/90-19  | 62M | TT | [ R ] |

Tread pattern for the rear wheels. Recommended for soft to intermediate terrain. High-profile knobs that dig deep. Exceptional traction on any loose terrain.



# Cross country



C-10

26338 120/90-18 54R TT [ F ] COUNTRY CROSS  
\*NHS

Sand/mud Soft Medium Hard

Tread pattern for the rear wheels. Designed for use in very wet, muddy and slippery conditions to intermediate type of terrain. Features a very open and aggressive tread pattern for maximum drive in the most adverse conditions. For Enduro competitions where FIM tyres are not required.



C-19

26709 90/90-21 54R TT [ F ] SUPER  
26104 90/100-21 57R TT [ F ] SUPER

Sand/mud Soft Medium Hard

Tread pattern for the front wheels. Recommended for semi-hard terrain. Tread pattern design provides optimum riding properties in all riding modes. Suitable for Enduro FIM and Cross Country competitions.



C-18

26555 120/90-18 65R TT [ R ] COUNTRY CROSS

Sand/mud Soft Medium Hard

Tread pattern for the rear wheels. A spaced knob design for great clean-out ability in mud or sand. Side knobs with a hooked profile aid acceleration. A durable pliable tyre tread that will not chunk. Ideal for all varieties of off-road terrain, from medium soft to intermediate and medium hard.



C-18

26330 110/100-18 59R TT [ R ] SUPER LIGHT  
26557 120/90-18 65R TT [ R ] SUPER LIGHT  
26641 100/90-19 57M TT [ R ] SUPER LIGHT

26614 110/90-19 62M TT [ R ] SUPER LIGHT

Sand/mud Soft Medium Hard

Tread pattern for the rear wheels. Suitable for Cross Country and Hard Enduro. Excellent grip on wet roots and rocky terrain. A great sticky tyre for wet roots and rocks made to handle all circumstances. Softer tread compound allows the tyre to flex without tearing knobs. The C-18 green stripe has a lighter carcass (one textile ply less) than the C-18 yellow stripe.

# Cross country



XT-754

28022 120/90-18 65M TT SUPER LIGHT  
\*NHS

Sand/mud Soft Medium Hard

Tread pattern for the rear wheels. Extremely aggressive tread design. Works great on a tough uphill covered with loose shale, it does not cut or tear knobs. High-profile knobs that dig deep. Exceptional traction on any loose terrain. Semi-soft but long-lasting compound.



XT-454

28082 110/100-18 54M\* TT [ R ] SUPER SOFT  
\*NHS

Sand/mud Soft Medium Hard

Tread pattern for the rear wheels. Extra soft tread compound. Suitable for extreme enduro.



C-19

26710 90/90-21 54R TT [ F ] SUPER LIGHT  
26105 90/100-21 57R TT [ F ] SUPER LIGHT

Sand/mud Soft Medium Hard

Tread pattern for the front wheels. Works well with mousse or a heavy duty tube. This tyre works great on medium soft to intermediate and medium hard to hard terrain. Excellent grip on rocky terrain. This tyre is made from a softer tread compound suitable for Hard Enduro. The C-19 green stripe has a lighter carcass (one textile ply less) than the C-19 yellow stripe.



XT-946

28004 120/100-18 68M TT [ R ] ICE SOFT  
\*NHS

Motocross tyres with a classical carcass and a special soft compound; the compound is flexible and elastic in the freezing cold up to -10°C and offers good grip in such conditions.

# Enduro

## EF-07 Super

The EF-07 tread pattern in the Super version (marked with yellow stripe) was designed to meet the FIM specifications (Federation International Motorcycle) for sport enduro competitions and developed in cooperation with many top enduro riders.

**OUTSTANDING GRIP AND TRACTION**  
Knob distribution and geometry are designed to offer outstanding grip and traction with high resistance in both dry and wet conditions, and from soft/loose to hard terrains.



**WIDE RANGE OF TERRAINS**  
The tread compound is resistant to tearing and cutting, and suited to a wide range of terrains – from soft and intermediate to rocky conditions; the carcass of EF-07 is stiffer than with the green stripe version.

| EF-07                           |           |     |    |     |       |
|---------------------------------|-----------|-----|----|-----|-------|
| 26408                           | 110/80-18 | 58M | TT | [R] | SUPER |
| 26406                           | 120/90-18 | 71R | TT | [R] | SUPER |
| 26276                           | 130/90-18 | 69R | TT | [R] | SUPER |
| 26280                           | 140/80-18 | 70R | TT | [R] | SUPER |
| Sand/mud   Soft   Medium   Hard |           |     |    |     |       |



| EF-05                           |           |     |    |     |       |
|---------------------------------|-----------|-----|----|-----|-------|
| 26522                           | 120/80-19 | 63R | TT | [R] | SUPER |
| Sand/mud   Soft   Medium   Hard |           |     |    |     |       |

Tread pattern for the rear wheels for Enduro FIM races. Suitable for a wide range of terrain. Very good grip properties and very low tyre wear, even on hard terrain.



| C-19                            |           |     |    |     |       |
|---------------------------------|-----------|-----|----|-----|-------|
| 26709                           | 90/90-21  | 54R | TT | [F] | SUPER |
| 26104                           | 90/100-21 | 57R | TT | [F] | SUPER |
| Sand/mud   Soft   Medium   Hard |           |     |    |     |       |

Tread pattern for the rear wheels designed to meet the FIM specifications for sport enduro competitions. Developed in cooperation with many top enduro riders. The tread design provides optimum riding properties in all riding modes. Suitable for cross country competition too.

# Extreme enduro

## EF-07 Super Light

The EF-07 Super Light (green stripe) is made from a slightly softer tread compound than the Super version (yellow stripe). It ensures excellent handling in wet forest and meadow soils. It is designed for the toughest competitions and conforms to the current FIM regulations in terms of design and tread depth.



**FOR THE TOUGHEST COMPETITIONS**

- Open tread design ejects mud and loose ground that a trials tyre will not.
- Very good grip properties and slightly faster than the yellow stripe version.
- A spaced knob design works well in mud or sand. Tread knobs distribution and geometry are designed to offer outstanding grip and traction in both dry and wet conditions, from soft and loose terrain to hard ground.
- Meant to take the off-road terrain where conditions can be extremely tough to get traction.
- The lightweight, flexible carcass with a reinforced shoulder guarantees a large contact surface and good shock-absorption. It resists tearing and cutting and is suited for tough to extreme off-road conditions; the carcass is more pliable than with the yellow stripe version.

| EF-07                           |           |     |    |     |             |
|---------------------------------|-----------|-----|----|-----|-------------|
| 26402                           | 120/90-18 | 71R | TT | [R] | SUPER LIGHT |
| 26278                           | 130/90-18 | 69R | TT | [R] | SUPER LIGHT |
| 26274                           | 140/80-18 | 70R | TT | [R] | SUPER LIGHT |
| Sand/mud   Soft   Medium   Hard |           |     |    |     |             |



Photo: Actiongraphers

# Extreme enduro

## EF-07 Super Soft



EF-07

|                                 |           |      |    |       |            |     |
|---------------------------------|-----------|------|----|-------|------------|-----|
| 26273                           | 140/80-18 | 70R* | TT | [ R ] | SUPER SOFT | ■ ■ |
| *NHS                            |           |      |    |       |            |     |
| Sand/mud   Soft   Medium   Hard |           |      |    |       |            |     |

### FOR THE MOST DEMANDING CONDITIONS

The Mitas EF-07 Super soft tyre (marked with two green stripes) is a rear tyre combining the enduro tread and ultra sticky soft compound for extreme, most demanding conditions. The tyre is best suited for extreme rocky, stony, wet and mud terrains. It is designed for vertical climbs and used in extreme enduro races. Its significantly enhanced carcass and extra soft compound are ideal for all terrains and offer an excellent grip. It is by far the best choice in races such as Roof-of-Africa, Erzbergrodeo, Red Bull Romaniacs, Sea to Sky, and many others.

The EF-07 Super Soft is best paired with the front tyre, 90/100-21 C-19 Super Light (1 green stripe) for extreme grip.



C-19

|                                 |           |     |    |       |             |   |
|---------------------------------|-----------|-----|----|-------|-------------|---|
| 26710                           | 90/90-21  | 54R | TT | [ F ] | SUPER LIGHT | ■ |
| 26105                           | 90/100-21 | 57R | TT | [ F ] | SUPER LIGHT | ■ |
| Sand/mud   Soft   Medium   Hard |           |     |    |       |             |   |

Tread pattern for the front wheels. Excellent grip on rocky terrain. Its special softer tread compound is suitable for Hard Enduro. Its carcass is lighter (1 textile ply less) than with the C-19 yellow stripe. This extreme tyre works on medium-soft to intermediate and medium-hard to hard terrain.

# Rally



E-12

|       |           |     |    |       |   |
|-------|-----------|-----|----|-------|---|
| 24620 | 140/80-18 | 70T | TT | [ R ] | ■ |
|-------|-----------|-----|----|-------|---|

Tread pattern for the rear wheels. Developed to meet the demands of tough rally competitions including Dakar and other all-terrain challenges. Larger block pattern and more open tread offers fantastic grip and wear rate. Based on the popular E-09 Dakar, the E-12 has a lighter carcass marked with a green stripe. This tyre has a slightly larger block pattern and more open tread than the E-09, but offers fantastic grip and wear rate.



E-13

|       |          |     |    |       |   |
|-------|----------|-----|----|-------|---|
| 24621 | 90/90-21 | 54R | TT | [ F ] | ■ |
|-------|----------|-----|----|-------|---|

Tread pattern for the front wheels recommended for sand to medium and medium-hard terrain. The tread compound is optimised for braking and precision steering. Great performance in all riding modes on softer terrain in rally competitions.



C-21

|       |          |     |    |       |       |   |
|-------|----------|-----|----|-------|-------|---|
| 22654 | 90/90-21 | 54R | TT | [ F ] | SUPER | ■ |
|-------|----------|-----|----|-------|-------|---|

Tread pattern for the front wheels recommended for semi-hard to rocky terrain. The tread compound is optimised for braking and precision steering. Great performance in all riding modes on softer terrain in rally competitions.

# Trial



ET-01

|       |         |     |    |       |
|-------|---------|-----|----|-------|
| 24883 | 4.00-18 | 64M | TL | [ R ] |
| 24885 | 4.00-18 | 64M | TL | [ R ] |
| 24667 | 2.75-21 | 45M | TL | [ F ] |

Suitable for both the front and rear wheels of trial motorcycles. The X-PRO version with an extra soft compound is suitable for professional trial competitions. The ET-01 2.75-21 is suitable for riding on both maintained and unmaintained roads. The tyre is designed for use in trial competitions and is also suitable for Enduro competitions where classical off-road tyres for enduro and motocross are not permitted. The ET-01 4.00-18 X-PRO is the latest trial racing tyre and it features a new carcass construction with an extra soft tread compound, allowing excellent tyre grip and riding properties on a wide range of terrains. ET-01 4.00-18 is recommended for amateur trial competition and for trial training. ET-01 is original equipment on GasGas Trial Contact ES with electric start and Trial School.



# Flat track



H-18

|       |                         |     |    |       |            |
|-------|-------------------------|-----|----|-------|------------|
| 23413 | 130/80-19 (27x7-19)     | 71H | TL | [ F ] | ROAD       |
| 23440 | 140/80-19 (27.5x7.5-19) | 71H | TL | [ R ] | ROAD       |
| 23409 | 130/80-19 (27x7-19)     | NHS | TT | [ F ] | FLAT TRACK |
| 23438 | 140/80-19 (27.5x7.5-19) | NHS | TT | [ R ] | FLAT TRACK |

Tyres without stripe are suitable for road motorcycles – street legal.



FT-18

|       |             |     |    |       |            |
|-------|-------------|-----|----|-------|------------|
| 23446 | 27x7-19     | NHS | TT | [ F ] | FLAT TRACK |
| 23443 | 27.5x7.5-19 | NHS | TT | [ R ] | FLAT TRACK |

New version of the tread pattern for flat track racing. Bigger knobs for better grip when cornering. A softer (green stripe marking) compound for hard track.

# Speedway



SW-10

|       |         |     |    |       |  |
|-------|---------|-----|----|-------|--|
| 24100 | 3.00-17 | 50P | TT | [ R ] |  |
|-------|---------|-----|----|-------|--|

\*NHS

Tread pattern for the rear wheels of kid speedway motorcycles. Used together with SW-11. Very good riding properties in all riding modes.



SW-11

|       |          |     |    |       |  |
|-------|----------|-----|----|-------|--|
| 24796 | 2 1/4-19 | 30P | TT | [ F ] |  |
|-------|----------|-----|----|-------|--|

\*NHS

Tread pattern for the front wheels of kid speedway motorcycles. Used together with SW-10. Very good riding properties in all riding modes.

# Speedway



SW-13

|       |         |      |    |       |  |
|-------|---------|------|----|-------|--|
| 24845 | 2.75-22 | 50P* | TT | [ R ] |  |
|-------|---------|------|----|-------|--|

\*NHS

Tread pattern for the rear wheels of speedway motorcycles. For long speedways. Excellent riding properties in all riding modes.



SW-07

|       |         |      |    |       |  |
|-------|---------|------|----|-------|--|
| 24532 | 3.75-19 | 61P* | TT | [ R ] |  |
|-------|---------|------|----|-------|--|

\*NHS

|      |              |      |
|------|--------------|------|
| Soft | Intermediate | Hard |
|------|--------------|------|

Tread pattern for rear wheels of speedway motorcycles complying with the new FIM rules. Top performance tyre for speedway motorcycles used in Speedway Grand Prix. Reinforced sidewall and optimised tread pattern with special compound provide best grip and handling on start and cornering. FIM approved.



SW-08

|       |         |      |    |       |              |
|-------|---------|------|----|-------|--------------|
| 24696 | 3.00-21 | 57P* | TT | [ R ] | ICE SPEEDWAY |
| 24854 | 2.50-23 | 48P* | TT | [ R ] | ICE SPEEDWAY |

\*NHS

Slick tread pattern for the rear wheels of speedway motorcycles. Specially developed for use with spikes for ice speedway racing. The special thick-walled 2.75-21 ICE SPEEDWAY tube is recommended for use with these tyres.



SW-12

|       |         |     |    |       |  |
|-------|---------|-----|----|-------|--|
| 24850 | 2.75-23 | 48P | TT | [ F ] |  |
|-------|---------|-----|----|-------|--|

\*NHS

Tread pattern for the front wheels of speedway motorcycles. For classic and long speedways. Optimum riding properties, especially in cornering.



SW-14

|       |         |      |    |               |  |
|-------|---------|------|----|---------------|--|
| 24025 | 2.50-10 | 4PR* | TT | [ F ] + [ R ] |  |
|-------|---------|------|----|---------------|--|

\*NHS

Tread pattern for front and rear wheels of kid speedway motorcycles. For motorcycles up to 50cc engine. Very good riding properties in all riding modes.



# Motocross competition replacements

| OLD MOTOCROSS COMPETITION LINE<br>(red stripe) |            |       |                    |
|--|------------|-------|--------------------|
| Cat.<br>CODE                                   | Tyre size  | LL/SS | Tread pattern      |
| 26312  | 100/100-18 | 59R   | C-20               |
| 26318  | 110/100-18 | 64R   | C-20               |
| 26500  | 120/90-18  | 65R   | C-20               |
| 26791  | 100/90-19  | 57M   | C-28<br>TERRACROSS |
| 26642  | 100/90-19  | 57M   | C-20               |
| 26793  | 110/90-19  | 62M   | C-28<br>TERRACROSS |
| 26612  | 110/90-19  | 62M   | C-20               |
| 26646  | 110/90-19  | 62M   | C-26               |
| 26520  | 120/80-19  | 63M   | C-20               |
| 26732  | 80/100-21  | 51R   | C-21               |
| 26720  | 80/100-21  | 51M   | C-27               |
| 26655  | 90/90-21   | 54R   | C-21               |
|  |            |       |                    |
| 26644  | 110/90-19  | 62M   | C-24               |
| 26718  | 80/100-21  | 51M   | C-25               |
|  |            |       |                    |
|  |            |       |                    |
| 26310  | 100/100-18 | 59R   | C-18               |
| 26317  | 110/100-18 | 64M   | C-18               |
| 26328  | 110/90-18  | 61M   | C-12               |
| 26344  | 120/90-18  | 65M   | C-12               |
| 26556  | 120/90-18  | 65R   | C-18               |
| 26640  | 100/90-19  | 57M   | C-18               |
| 26626  | 110/90-19  | 62M   | C-12               |
| 26613  | 110/90-19  | 62M   | C-18               |
| 26518  | 120/80-19  | 63M   | C-18               |
| 26730  | 80/100-21  | 51R   | C-19               |
| 26766  | 90/90-21   | 54R   | C-15               |
| 26711  | 90/90-21   | 54R   | C-19               |
| 26107  | 90/100-21  | 57R   | C-19               |
| 26108  | 90/100-21  | 57M   | C-27               |

| NEW MOTOCROSS COMPETITION LINE<br>(red stripe) |            |       |                        |
|--|------------|-------|------------------------|
| Cat.<br>CODE                                   | Tyre size  | LL/SS | Tread pattern          |
| 26315  | 100/100-18 | 59M   | TERRA FORCE<br>MX-MH   |
| 26649  | 110/100-18 | 64M   | TERRA FORCE<br>MX-MH   |
| 26353  | 120/90-18  | 65M   | TERRA FORCE<br>MX-MH   |
| 26797  | 100/90-19  | 57M   | TERRA FORCE<br>MX-MH   |
| 26797  | 100/90-19  | 57M   | TERRA FORCE<br>MX-MH   |
| 26798  | 110/90-19  | 62M   | TERRA FORCE<br>MX-MH   |
| 26798  | 110/90-19  | 62M   | TERRA FORCE<br>MX-MH   |
| 26798  | 110/90-19  | 62M   | TERRA FORCE<br>MX-MH   |
| 26516  | 120/80-19  | 63M   | TERRA FORCE<br>MX-MH   |
| 26733  | 80/100-21  | 51M   | TERRA FORCE<br>MX-MH   |
| 26733  | 80/100-21  | 51M   | TERRA FORCE<br>MX-MH   |
| 26761  | 90/90-21   | 54M   | TERRA FORCE<br>MX-MH   |
| 26157  | 70/100-14  | 40M   | TERRA FORCE<br>MX-MH   |
| 26647  | 110/90-19  | 62M   | TERRA FORCE<br>MX-SAND |
| 26719  | 80/100-21  | 51M   | TERRA FORCE<br>MX-SAND |
| 26517  | 120/80-19  | 63M   | TERRA FORCE<br>MX-SAND |
| 26633  | 100/90-19  | 57M   | TERRA FORCE<br>MX-SAND |
| 26311  | 100/100-18 | 59M   | TERRA FORCE<br>MX-SM   |
| 26321  | 110/100-18 | 64M   | TERRA FORCE<br>MX-SM   |
| 26321  | 110/100-18 | 64M   | TERRA FORCE<br>MX-SM   |
| 26559  | 120/90-18  | 65M   | TERRA FORCE<br>MX-SM   |
| 26559  | 120/90-18  | 65M   | TERRA FORCE<br>MX-SM   |
| 26645  | 100/90-19  | 57M   | TERRA FORCE<br>MX-SM   |
| 26606  | 110/90-19  | 62M   | TERRA FORCE<br>MX-SM   |
| 26606  | 110/90-19  | 62M   | TERRA FORCE<br>MX-SM   |
| 26519  | 120/80-19  | 63M   | TERRA FORCE<br>MX-SM   |
| 26731  | 80/100-21  | 51M   | TERRA FORCE<br>MX-SM   |
| 26760  | 90/90-21   | 54M   | TERRA FORCE<br>MX-SM   |
| 26760  | 90/90-21   | 54M   | TERRA FORCE<br>MX-SM   |
|  |            |       |                        |
|  |            |       |                        |

# Tubes

| Order<br>Code | Product description   | Valve | Thickness | Packing<br>(pcs) |
|---------------|---|-------|-----------|------------------|
|               | OFF ROAD - HEAVY DUTY   |       |           |                  |
| 576983        | 2.50-10,2.75-10,3.00-10   | TR4   | HD        | 50               |
| 576986        | 80/100-12 (70/100/3.00/3.25-12)   | TR6   | HD        | 50               |
| 576988        | 60/100-14 (2.25/2.50-14)  | TR6   | HD        | 50               |
| 576990        | 90/100-14 (3.60/4.10-14)  | TR6   | HD        | 30               |
| 576992        | 90/100-16   | TR6   | HD        | 30               |
| 576993        | 70/100-17 (2.25/2.50-17)  | TR6   | HD        | 30               |
| 576984        | 100/90-17, 110/90-17 (3.00/3.50-17)   | TR6   | HD        | 30               |
| 576995        | 140/100-17  | TR6   | HD        | 30               |
| 576997        | 140/80-18   | TR6   | HD        | 30               |
| 576999        | 120/90,130/80,100/100,110/100-18<br>(4.00/4.50/4.75/5.00-18)  | TR6   | HD        | 30               |
| 577001        | 3.00-19, 3.50-19, 3.75-19, 80/90-19,<br>90/90-19, 110/90-19, 100/90-19,<br>110/80-19, 120/90-19, 130/80-19<br>(130/70-19, 100/90-19, 120/80-19,<br>70/100-19, 4.00/4.50-19) | TR6   | HD        | 30               |
| 576985        | 120/90-19 (5.00-19)   | TR6   | HD        | 30               |
| 577003        | 80/100-21, 90/90-21<br>(80/90-21,90/100-21, 80/100-21,<br>2.50/2.75/3.00/3.25-21)   | TR6   | HD        | 30               |
|               | OFF ROAD - ULTRA HEAVY DUTY   |       |           |                  |
| 574361        | 120/90, 130/80,140/80, 100/100,<br>110/100-18   | TR6   | UHD       | 10               |
| 574362        | 120/80,130/70,100/90,110/90-19  | TR6   | UHD       | 10               |
| 574363        | 90/90, 90/100, 80/100-21  | TR6   | UHD       | 10               |

Tubes are made of butyl compound and are packed in individual boxes.

Ultra heavy duty tubes are made of natural rubber and are packed in individual boxes.



TR 4



TR 6

| Thickness | mm      |
|-----------|---------|
| Normal    | 1,2-1,4 |
| HD        | 1,9-2,0 |
| UHD       | 4,0     |

# Legend

| Acronym         | Meaning /Definition  |
|-----------------|--|
| TT              | Tube Type  |
| TL              | Tubeless   |
| REINFORCED      | Increased load capacity by ETRTO (The European Tyre and Rim Technical Organisation).   |
| SUPER           | Design with special tread compound for Enduro racing.  |
| SUPER LIGHT     | Design with special tread compound and lightweight frame for Enduro extreme.   |
| SUPER SOFT      | Tyre with softer carcass and extra soft tread compound suitable for extreme hard enduro competition.   |
| COUNTRY CROSS   | Motocross tyre with Enduro racing tread compound suitable for Cross Country racing.  |
| PIT CROSS       | Tyre with increased load capacity suitable for PIT CROSS races.  |
| DAKAR           | Design with reinforced frame for extreme rally.  |
| WINTER FRICTION | Special version for use in winter conditions and suitable for spiking.   |
| SPIKE           | WINTER FRICTION design with spikes.  |
| ICE SOFT        | Special version for motoskijöring.   |
| M+S             | Mud+Snow Tyre suitable for winter conditions or year round operation. Maximum designed tyre speed should be observed, if fitted on a motorcycle with a higher designed tyre speed. |
| M/C             | M/C - designation on motorcycle tyres with nominal diameter codes 13 and above to prevent misfitment with passenger car tyres or agricultural tyres.                               |
| NHS             | Not for Highway Service  |
| SM              | Soft/Medium  |
| MH              | Medium/Hard  |



Don't miss our complete on-road range:  
**Tyres for on-road motorcycles,  
scooters and mopeds**

A complete assortment of tyres can be found at  
**[mitas-moto.com](https://mitas-moto.com)**



## Mitas Motorcycle Tires and Tubes

Škofjeloška cesta 6, 4000 Kranj, Slovenia

Phone: +386 4 206 58 83

[mitas-moto.com](http://mitas-moto.com)

[info-moto@mitas-tyres.com](mailto:info-moto@mitas-tyres.com)

 Mitas Moto

 Mitas Moto



Printing errors and mistakes reserved.



Your Distributor/Dealer:

# Mitas

[mitas-moto.com](http://mitas-moto.com)